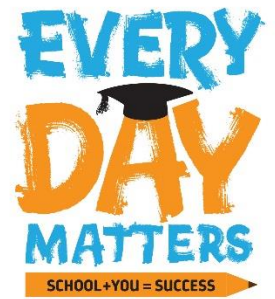




Education & Children's Services
Improving Lives Together
 Ambition | Compassion | Integrity

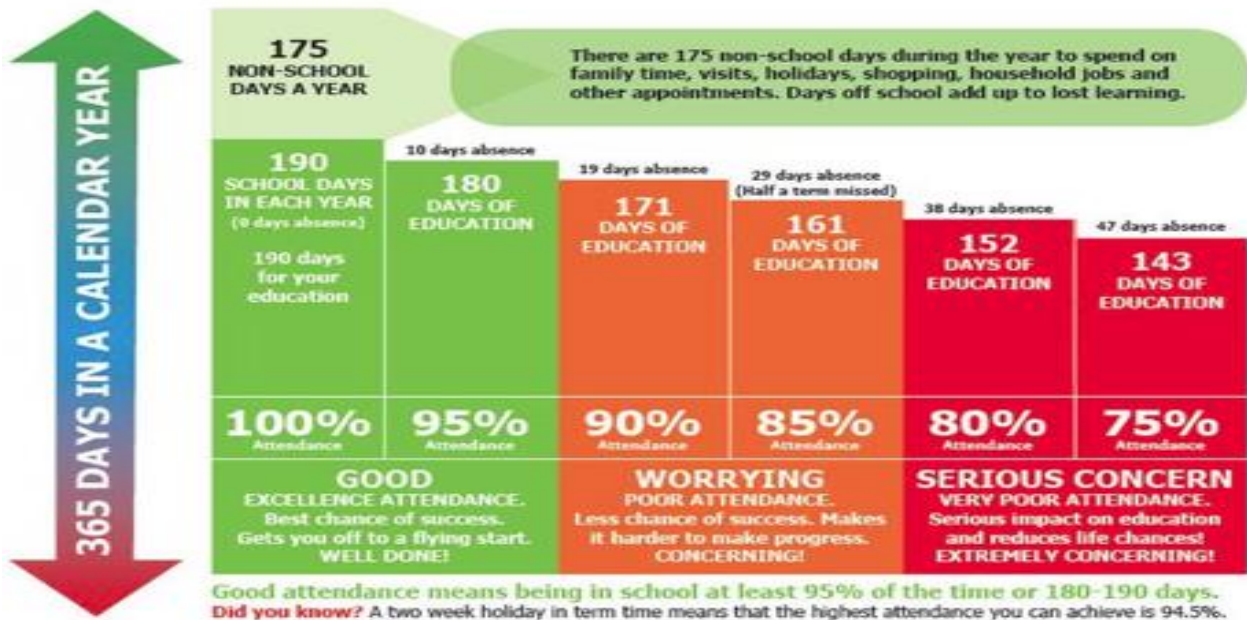


Perth & Kinross Council Education & Children's Services is committed to [raising standards of performance and achievement](#) in its schools.

In order for children and young people to have the best possible chance of achieving their potential, it is in their best interests to attend school regularly.

EVERY SCHOOL DAY COUNTS

Don't miss out on the education you deserve.



Perth and Kinross Council have a target of 96% attendance for all children and young people in primary schools and an expectation that we will work with families and young people to achieve this.

As a school, we are legally required to [monitor children's punctuality and attendance](#) to enable them to receive an education that maximises the opportunity for each child to achieve his/her potential.. As a school, if pupil attendance and lateness does not improve, we are also required to refer pupils to the Area Attendance Sub-Committee in terms of Section 36 and 37 of the Education (Scotland) Act 1980:

[Attendance Procedures - Advice for Parents 1](#)

[Attendance Procedures - Advice for Parents 2](#)

We understand families choose to take [holidays](#), attend appointments or become unwell. We would just like you to make a fully informed choice before choosing to remove your child from school.

When a child’s absence falls below this figure it has a dramatic impact on their learning. The figures below state very clearly the effect absence has on your child’s learning.

Attendance during one school year	Equates to school days absent in one school year	Equates to school weeks absent in one school year	Equates to school lessons missed in one school year	Effect of absence on your child’s learning
95%	9 days	2 weeks	40 lessons	Watch out! Your child will have gaps in their learning.
90%	18 days	4 weeks	80 lessons	
85%	27 days	6 weeks	120 lessons	Danger! It will be difficult for your child to catch up.
80%	36 days	8 weeks	160 lessons	
75%	45 days	10 weeks	200 lessons	It will be almost impossible for your child to catch up.
70%	54 days	12 weeks	240 lessons	
60%	72 days	14 weeks	320 lessons	

WHEN ATTENDANCE DROPS TO BETWEEN 85% - 90% - OVER 5 YEARS A CHILD WILL LOSE HALF OF A YEAR OF SCHOOLING.

WHEN ATTENDANCE DROPS TO 80% - OVER 5 YEARS A CHILD WILL LOSE A YEAR OF SCHOOLING.

Every day at school is like getting a piece of a jigsaw puzzle – the more pieces children have the easier it is for them to solve the puzzle. So, it would make sense that every day a child is at school, the more successful their learning will be. We plan learning opportunities that build on previous activities and understanding. Therefore every day is as important as the previous day or the next day. The more time your child spends in school, the better your child’s attainment in learning will be, and the more confident and successful they will feel in themselves.

Good time keeping means ...
 Making sure your child is at school and ready to learn, before the bell rings!

Punctuality Matters!
 Lost Minutes = Lost Learning

If your child will not be present at school for any reason, **please let the school know by 9:15am**, either by phoning 01764 657 800 or email: st-dominics@pkc.gov.uk

We will phone you to check where your child is if we do not have this information. If we cannot contact you, we will phone your emergency contact. The Police will be contacted in the event no contact is made.

Please remember if your child has a sickness/diarrhoea bug please keep your child at home for **48 hours after the last bout**.

